

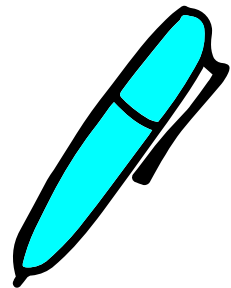
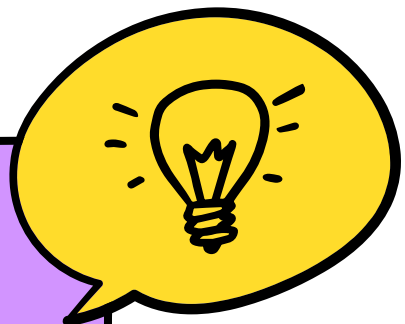
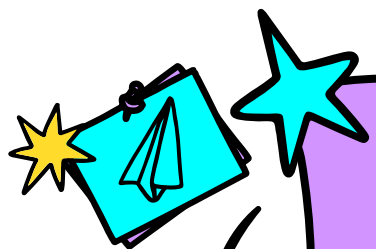


The Fixies

Part 1 (episode 1-20)

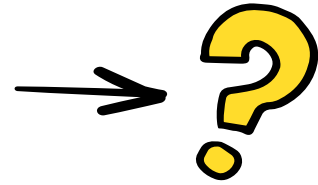
EPISODE 1:

The Instructions
The Shadow Play




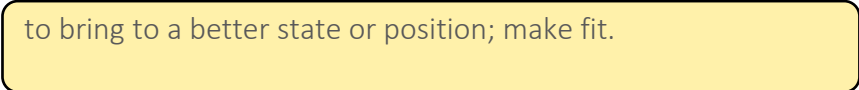

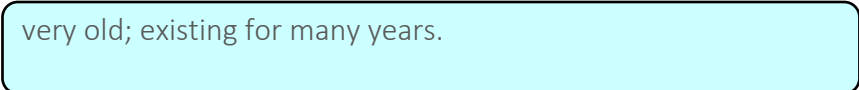

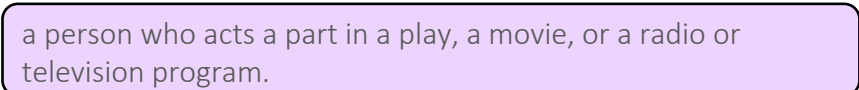

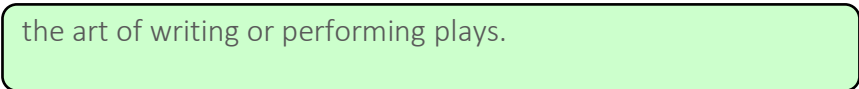
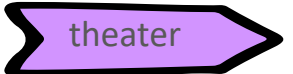





A. VOCABULARY



★ Match each word to its meaning.

- | | | | |
|----------|--|----|---|
| _____ 1. |  | a. |  |
| _____ 2. |  | b. |  |
| _____ 3. |  | c. |  |
| _____ 4. |  | d. |  |
| _____ 5. |  | e. |  |
| _____ 6. |  | f. |  |

B. VOCABULARY



★ Choose the correct word in the box for each sentence.

1. teach us how to do things right.
2. We can the picture and sound of the television.
3. The very first stools and benches appears as far back as Egypt.
4. At the opera, the don't speak their lines, they sing them.
5. In the dramatic , the actors speak the lines of the .



A.COMPREHENSION CHECK



★ Choose the correct answers



The Instructions



The Shadow Play

1. What furniture does Tom need to assemble?

a. chair

b. table

2. Who turns into a screw?

a. Simka

b. Nolik

3. What fairytale are they rehearsing?

a. Little Red Riding Hood

b. The Wolf

4. Who acts as the hunter in the shadow theater?

a. Nolik

b. Tom



B.COMPREHENSION CHECK



★ Rearrange the words to form correct sentences.

1. have / to / the / You / follow / instructions / .

2. can / and / sound / the / way / we / like / them / We / adjust / the / picture / .

3. important / man / the / chair / The / more / the / higher / the / back / of / his / .

4. shadow / will / you / get / go / near / the / lamp, / your / bigger / on / the / screen / If / .

5. in / a / play / theater / Actors / .





TRUE OR FALSE?



The Instructions



The Shadow Play

1. Instructions are for dummies.
2. The instructions for medicines tell us what the medicine is for.
3. There are theaters where the performers are animals.
4. In the theater show, the hunter appears mighty and fearless.



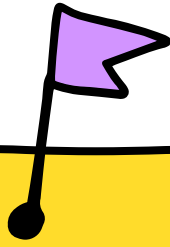
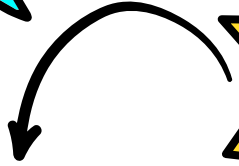
D.COMPREHENSION CHECK



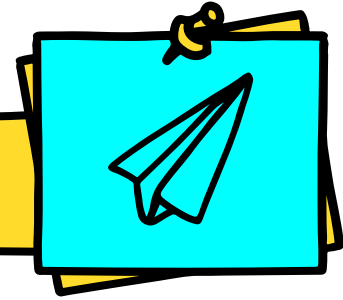
★ Answer the questions.

1. Have you ever assembled furniture? If not, who assembles the furniture in your home?
2. Do you always follow instructions? Is it always important to follow the instructions? Why or why not?
3. Have you tried watching a theater show? What's your favorite type of theater?
4. Do you want to try acting in a theater show? Why or why not?
5. Which story do you like the most? Why? (Choose only one story from the video.)





SUMMARY



★ Describe each picture. Explain what you learned about them. You may use the words in the box.

1.



adjust instructions

2.



theater actor
