



아이비영어
상위1%선생님

Teen Kids News

Part 1



01



Early Decision: Pros & Cons

[*Click here to watch the news clip*](#)

I. Read the sample sentences. Then fill in the blanks with the correct answers from the tablet.

1

*Just so we're all **on the same page**, what is early decision?*

If two or more people are **on the same page**, they _____.

2

*That number could be as high as 50 percent of the **incoming** class being accepted early decision.*

"Incoming" is used before nouns. It describes a person or group that has been recently chosen to _____.

3

*You can still reapply to that school that might have **deferred** you.*

Schools **defer** you if they _____.

A. discuss many topics

B. start doing something

C. a very intelligent person

D. are very useful or important

E. agree about what they are talking or doing

F. delay making a decision on your application

I. Read the sample sentences. Then fill in the blanks with the correct answers from the tablet.

4

*That's certainly something to think about for those of us who aren't **brainiacs**.*

"**Brainiac**" is an informal word that means "_____."

5

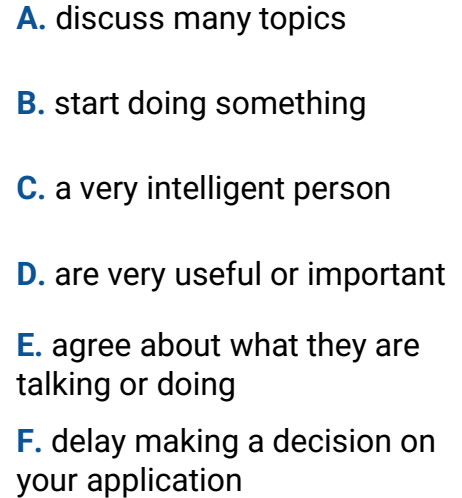
*That's why we love having you on the program — your advice is **priceless**.*

If things are **priceless**, they _____.

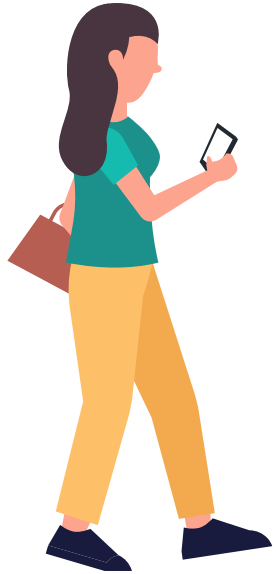
6

*I know we **covered a lot of ground** with Rob, so let me give you a quick recap.*

To **cover a lot of ground** is to _____.

- 
- A. discuss many topics
 - B. start doing something
 - C. a very intelligent person
 - D. are very useful or important
 - E. agree about what they are talking or doing
 - F. delay making a decision on your application

II. Choose the correct answer.



1. If you apply to a U.S. college early decision, _____.

- A. your application will be reviewed at the same time as regular-cycle candidates' applications
- B. you will learn whether or not you are accepted to that school before regular-cycle applicants do

2. Once you are accepted to a U.S. school early decision, you _____.

- A. have to attend that school
- B. can still apply to other schools

3. You will find out if you have been accepted to a U.S. school early decision in _____.

- A. March
- B. December

II. Choose the correct answer.



4. Because of the November deadline for applications, early-decision applicants _____.

- A. can retake entrance exams like the SAT and ACT to improve their scores
- B. may have limited extracurricular activities compared to regular-cycle applicants

5. According to Rob Franek, students may want to apply to a U.S. school early decision if they _____.

- A. need a lot of financial support from the school
- B. are certain that they want to attend that school

III. Fill in the boxes with the correct letters. (NOTE: The missing words are used in the video.)

ADVANTAGES AND DISADVANTAGES OF EARLY-DECISION APPLICATIONS

Advantages

You may have a better (1) of getting accepted into your dream school.

You will learn if you're admitted to the school sooner.

If you don't get accepted to the school, you can still (2) in the regular-decision cycle.

You'll save on application (3) .

Disadvantages

You'll have less (4) to strengthen your application.

You're required to attend the school if you get accepted into it.

You can't compare your (5) -aid package from the early-decision school to the ones you may get from other schools.

IV. Answer the questions below in complete sentences.

1.

Who is Rob Franek? Why is he qualified to give advice on applying to a U.S. college early decision?

2.

Students can choose to apply to a U.S. college early action instead of early decision.

a. When is the deadline for early-action applications?

b. Once you're accepted into a school early action, do you have to confirm your attendance at that school as soon as possible? Explain your answer.



3.

Why does applying early decision improve your chance of getting into a college?

4.

Toward the end of the video, what TWO things does Ava advise students to do when it comes to applying early decision?

V. Answer the questions below in complete sentences.

1



At the start of the video, the news anchor says, *“For those of us applying to college, it’s one of the biggest decisions we need to make.”* Why are college applications a big deal for most students?

2



Rob Franek works for The Princeton Review. Are you familiar with this company?

- If yes, what do you know about it?
- If no, do a quick Internet search. What does the company do?

3



If you were a student who wanted to attend college in the U.S., would you choose to apply early decision? Why or why not?

4



In the video, Ava says, *“Life is full of tough choices, ain’t it?”* Aside from school-related decisions, what are some specific examples of tough choices you’ve had to make?